

Dear Valued Customer,

Proponent receives many inquiries and customized surveys each week from established and new customers. We have reviewed the questions you have asked and prepared the following self-survey that will provide a timely response to your questions. This document is regularly reviewed for accuracy and need for improvement. *Date of last review: 10/27/2023.* We anticipate you will find this assessment report complete and accurate, but if you have additional questions which are not covered by this standard document, please reach out to us at [support@proponent.com](mailto:support@proponent.com).

**Who We Are** - As an employee-owned company, our success is reflected in yours. We are the world’s largest independent, employee-owned distributor of aircraft parts and supplies, and we have built our business around the idea of providing unique solutions to individual customers. With over 500,000 priced parts available, and same-day shipping worldwide, we provide you with what you need when you need it. We are registered in the System Acquisition Management (SAM) and are considered a large business having 500+ employee owners in 10 global locations.

**Environmental Policy** - At Proponent, our colleagues at all our global locations are committed to reducing our footprint on the world in which we live! We maintain a firm focus on saving energy, reducing the creation of waste, and getting the most out of resources required to maintain our business.

**FAA Authorization** – Proponent maintains a Production Approval Holder (PAH) status with the Los Angeles/Van Nuys MIDO office. This enables Proponent to offer our customers thousands of parts through our Federal Aviation Administration Parts Manufacturing Approval (FAA-PMA) approval from our licensing agreement with Boeing or by means of identity.

Proponent also offers thousands of parts in which our supplier partners are Production Approval Holders and provide parts authorized through licensing agreements, identity, or technical standard order. In these cases, the customer will receive a manufacturer's certificate of conformance and the airworthiness release certificate from that supplier. Proponent also maintains a model eligibility look up by Proponent PMA Part Number on our [website](#) at the bottom of the page.

**Proponent Warehouse Locations**

Building Location	Facility Size	Administrative Area	Warehouse/Storage Area	Warehouse/Storage Temperature
3120 Enterprise	110,000 sq. ft.	11,000 sq. ft.	99,000 sq. ft.	68 - 78°F
3050 Enterprise	44,894 sq. ft.	22,441 sq. ft.	22,453 sq. ft.	68 - 78°F
10601 State Street	50,000 sq. ft.	15,000 sq. ft.	35,000 sq. ft.	74 - 76°F
37 Wolmer Way	22,568 sq. ft.	13,080 sq. ft.	11,951 sq. ft.	50 - 68°F
J Keplerweg 16	56,680 sq. ft.	17,276 sq. ft.		
Boerhaaveweg 5-7			32,300 sq. ft.	59-86°F
Boerhaaveweg 13			7,104 sq. ft.	59-86°F
9 Seletar Aerospace Lane	20,139 sq. ft.	7,784 sq. ft.	12,355 sq. ft.	70-80°F
Plot Nos 10701 Jebel Ali Free Zone Logistics Centre (3PL)	53,819 sq. ft.	N/A	6,458 sq. ft.	68-77°F

**Proponent Quality Systems Certification** – Proponent maintains a Corporate Quality Management System (QMS) covering the policy and processes implemented at many of our global locations. Proponent's chosen certifying body is ASACB and

we subscribe and are certified to [AS9100 and AS9120](#) for manufacturing and distribution. We have also chosen to add [ASA-100 and AC00-56](#).

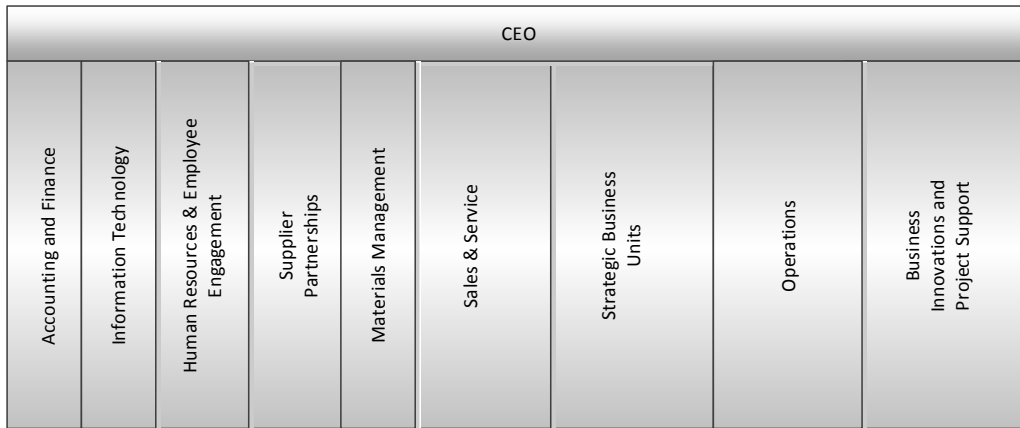
Proponent shall inform its Customers of any changes in its certification, registration, or accreditation within 48 hours of receiving notification of the change.

**Proponent Warehouse and Sales office Locations**

Cage Code   UEI	Name   Location	Certificates of Approval
59789 FZB5J3HJLEH8	<b>Proponent, Inc. dba (Proponent)</b> 3120 Enterprise Street Brea, CA 92821	<b>AS9100   AS9120   ASA-100</b> ISO9001:2015   AC 00-56B
5H519 MCZDQ99ES256	<b>Proponent, Inc. dba (Proponent Manufacturing)</b> 3050 Enterprise Street Brea, CA 92821	<b>AS9100   AS9120</b> ISO9001:2015
91NT4 GX3CH7NKFEH4	<b>Proponent, Inc. dba (Proponent) (Second Location)</b> 10601 State Street, Suite 1 Tamarac, Florida 33321 USA	<b>AS9100   AS9120   ASA-100</b> ISO9001:2015   AC 00-56B
KA966	<b>Proponent U.K. Limited (Third Location)</b> 37 Woolmer Way Bordon, Hampshire, GU35 9QE, United Kingdom	<b>AS9100   AS9120   ASA-100</b> ISO9001:2015   AC 00-56B
QD030	<b>Proponent S.E.A. PTE. LTD (Fourth Location)</b> 9 Seletar Aerospace Lane, 797439, Singapore	<b>AS9120   ASA-100</b> ISO9001:2015   AC 00-56B
H7503	<b>Proponent Netherlands BV (Fifth Location)</b> J. Keplerweg 16 2408 AC Boerhaaveweg 5-7, and 13 AD Alphen a/d Rijn, The Netherlands	<b>AS9120   ASA-100</b> ISO9001:2015   AC 00-56B
SA221	<b>Proponent Hong Kong Limited (Sixth Location)</b> 8/F, Millennium City 3 370 Kwun Tong Road Kowloon, Hong Kong	<b>AS9120   ISO9001:2015</b>
4P205	<b>Proponent, Inc. dba (Proponent) (Sales Office)</b> 1 Industrial Park Road – Essex, CT 06426	<b>AS9120   ISO9001:2015</b>
	<b>Proponent Iberia S.A. (Sales Office)</b> C/Lopez de Hoyos 155, 3rd Floor, Door 5, 28002 Madrid	<b>AS9120   ISO9001:2015</b>
	<b>Kapco Global China Trading Company Ltd (Sales Office)</b> 5501-1 Tower B, China International Center, Zhong Shan San Road No. 33 Yuexiu District, Guangzhou 510055 PR China	<b>AS9120   ISO9001:2015</b>



**Organizational Functional Roles**



**Competence and Training**

To ensure effective operation of the quality system, Proponent management maintains an ongoing training program that ensures that personnel performing work affecting product quality shall be competent based on appropriate education, training, skills, and experience. The training program is described in Proponent procedure CTP-075 Company Training Procedure. Training programs for Ethics, Product Safety, Counterfeit and Unapproved Parts, FOD & FOE, and Human Factors Awareness have been developed and implemented and required for appropriate personnel.

**Trade Compliance**

Trade compliance encompasses all of Proponent’s processes and is integrated into procedure to ensure compliance with domestic and international trade rules, regulations, and laws. It includes interrelated concepts like import compliance, export compliance, and import and export controls.

**Control of Nonconforming Outputs | Counterfeit/Unapproved Parts | Human Factors**

Proponent ensures that outputs that do not conform to their requirements are identified and controlled to prevent their unintended use or delivery. Nonconforming outputs include suspect unapproved, unapproved, counterfeit, and nonconforming products or service generated internally, received from an external provider, or identified by a customer. This is executed per procedure NCM-360 and using Proponent’s tracking system which is integrated with our ERP system for identification, investigation, and disposition.

**Corrective Action | Continuous Improvement**

Proponent works toward continually improving the suitability, adequacy, and effectiveness of the quality management system. We do this by considering the results of analysis, outputs from management review, to determine if there are needs or opportunities that are to be addressed as part of corrective action or continual improvement.



## **Conflict Materials | REACH | ROHS**

Proponent considers environmental compliance on a global level and thus has defined the following in our basic flowdown Quality System clause (QS1). This clause is mapped to every part we purchase and included in our Supplier Quality Requirements.

## **Ethics | EEO | Product Safety | ITAR | FOE/FOD**

Personnel doing work that is controlled by Proponent systems and processes are made aware of policies, objectives, their contribution to the QMS and benefits of improved performance, implications of not conforming with the QMS requirements, relevant QMS documented information and changes, their contribution to product or service conformity, product safety, and the importance of ethical behavior.

## **Frequently Asked Questions (FAQs)**

### **Does Proponent have a Supplier Management, Flowdown and Approval process?**

Yes, beginning with the supplier approval process and once they have been added to our approved supplier list, purchases may proceed using Proponent Quality Clauses. Supplier performance is monitored regularly, and improvement opportunities once identified may be acted upon.

### **Is there a Management Review and Internal Audit program for the Proponent Quality Management System**

Yes, the latest Management Review was in September 2023 and the next scheduled review is September 2024. The Senior Team members, Site Managers of stock holding sites, and Corporate Quality Systems personnel conduct a management review on the quality management system at least once a year. There are other organizational reviews and improvement project reviews regularly scheduled throughout the calendar year.

Yes, Proponent has a Global Internal Audit Program, and a documented procedure defines the responsibilities and requirements for planning and conducting audits, establishing records and reporting results.

### **Does Proponent have a Business Continuity and Risk Mitigation Plan?**

Yes, At Proponent it is our policy to respond to a Significant Business Disruption by safeguarding Employees' lives and company property, making a financial and operational assessment, quickly recovering, and resuming operations, protecting our books, records, and critical data, as well as those of our customers and suppliers.

- 1. When was your business established?** Proponent was established in 1972.
- 2. Who can I contact if I have any concerns?** [Support@Proponent.com](mailto:Support@Proponent.com)
- 3. What is the Product scope of Proponent?** Refer to product scope <https://www.proponent.com/products/>
- 4. What is the warranty period for Proponent items?**

Please refer to <https://www.proponent.com/terms-conditions/#warranty>

- 5. Are you International Traffic in Arms Regulations (ITAR) Complaint? Yes**



6. **Does your organization have a shelf-life control system?** Yes
7. **Does the organization have a procedure to control authority and stamp issuance?** Yes
8. **Does your organization have or follow a packaging standard?** Yes, per ATA Spec 300
9. **What is your sampling procedure?** Proponent's sampling plan has been developed based on ANSI/ASQC Z1.4.
10. **Are you registered for System Acquisition Management (SAM)?** Yes
11. **How many Global Employees does Proponent have?** 500+ Global employees

